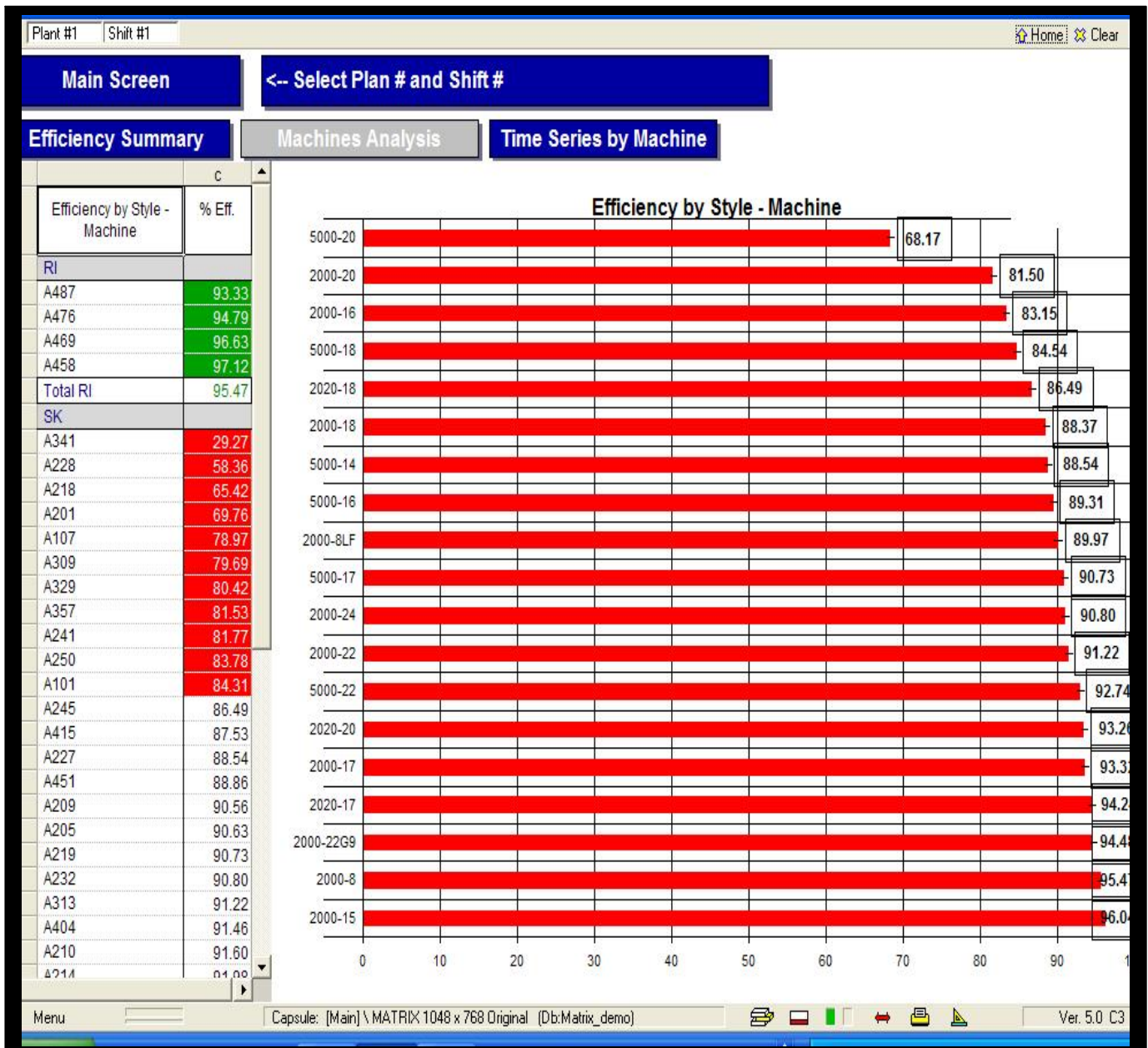


Business and Production Intelligence

Screen and Reporting Overview

Efficiency by Style-Machine



Percentage (%) Efficiency- Total

[Home](#) | [Clear](#)

Main Screen

<-- Select Plan #

Efficiency Summary

Machines Analysis

Time Series by Machine

Styles by Plant

% Eff. TOTAL

Drill by Machine	c	c	c	c	c	c	c	c	c	c	c
	% Eff. 2/1/2005	% Eff. 2/2/2005	% Eff. 2/3/2005	% Eff. 2/4/2005	% Eff. 2/5/2005	% Eff. 2/6/2005	% Eff. 2/7/2005	% Eff. 2/8/2005	% Eff. 2/9/2005	% Eff. 2/10/2005	% Eff. TOTAL
Plant #1											
5000-14	80.56	62.50	88.06	86.32	89.17	93.33	90.21	86.14	83.75	67.57	84.09
2000-16	95.14	73.96	88.75	89.51	92.08	89.55	75.94	69.39	93.89	91.60	84.12
5000-18	91.99	89.75	87.64	88.22	77.55	86.74	90.21	86.21	76.32	86.39	84.78
5000-22G9	93.68	92.78	74.17						77.17	95.07	85.25
2000-20	87.74	80.47	88.30	84.10	77.58	87.72	87.82	90.76	86.63	85.86	86.40
2020-18	88.82	90.83	85.69	90.63	90.14	85.35	84.38	74.97	93.28	96.11	86.76
2000-20G9	88.58	74.93	91.46					96.39	92.92	95.56	86.96
5000-20	91.70	94.31	93.68	88.82	55.44	88.72	82.29	94.67	89.09	93.44	87.13
2000-8	85.91	96.30	92.53	90.38	96.32	48.52	97.05	90.36	93.35	95.04	88.59
2000-22G9			84.86	94.86	93.47	94.86	93.82	93.11	74.03		88.71
2000-8LF	94.10	96.25	85.83	86.46	89.13	91.11	92.43	72.81	88.75	94.03	89.09

Menu

Capsule: [Main] \ MATRIX 1048 x 768 Original (Db:Matrix_demo)

Ver. 5.0 C3

Style Across Plants

Shift (ALL)
Home Clear

Main Screen
<-- Select Shift #

Efficiency Summary
Machines Analysis
Time Series by Machine
Styles across Plants

Styles across Plants

- Plant #1
- Plant #2
- Plant #3
- Plant #4

Styles across Plants	C	C	C	C	C	C	C	C	C	C	C
	% Eff. 2/1/2005	% Eff. 2/2/2005	% Eff. 2/3/2005	% Eff. 2/4/2005	% Eff. 2/5/2005	% Eff. 2/6/2005	% Eff. 2/7/2005	% Eff. 2/8/2005	% Eff. 2/9/2005	% Eff. 2/10/2005	% Eff. TOTAL
2000-15											
Plant #2	83.23	77.57	94.20	93.61	95.10	93.61	81.71	78.65	95.63	96.08	88.75
Plant #3	81.39	81.88	94.72	94.86	96.00	96.13	96.32	86.96	95.23	97.17	91.99
Plant #4	92.58	87.82	93.43	94.65	91.46	93.52	95.37	97.37	95.48	89.23	93.60
Plant #1	94.17	91.08	93.82	94.58	94.55	94.97	96.94	93.93	95.22	95.97	94.53
Total 2000-15	87.41	84.64	94.05	94.49	94.17	94.66	93.85	89.71	95.36	94.35	92.36
2000-16											
Plant #2	84.38	52.01	93.82	93.13	91.74	83.68	93.40	93.81	88.22	36.39	83.35
Plant #1	95.14	73.96	88.75	89.51	92.08	89.55	75.94	69.39	93.89	91.60	84.12
Plant #4	94.31	92.50	91.90	87.85	88.75	92.15	92.36	94.51	88.68	93.19	91.63
Total 2000-16	91.27	72.82	91.55	90.16	91.03	88.73	84.41	79.53	91.61	73.73	85.69
2000-17											

Menu
Capsule: [Main] \ MATRIX 1048 x 768 Original (Db:Matrix_demo)
Ver. 5.0 C3

Knitted Weight

Plant {ALL} Shift {ALL}

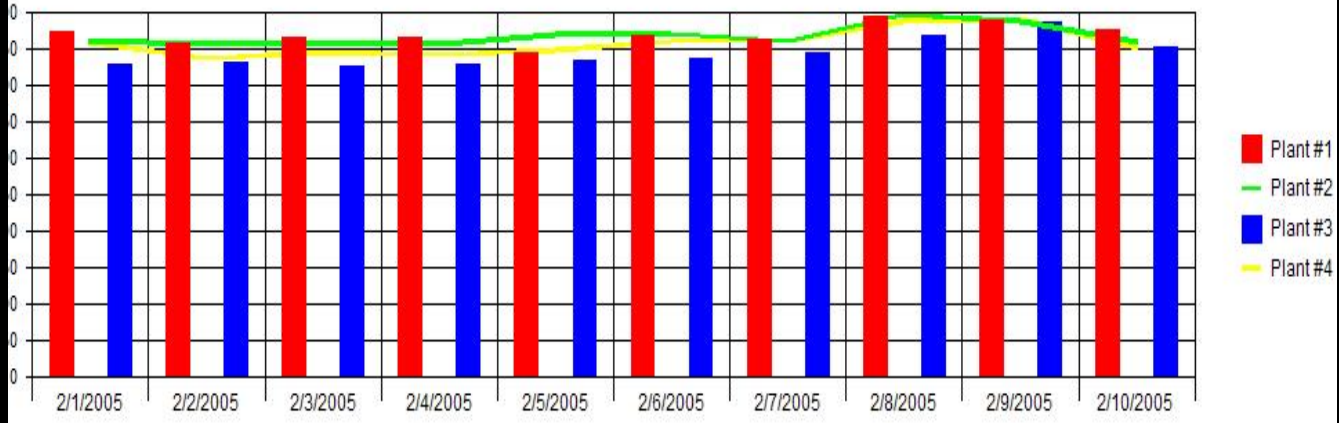
Home Clear

Main Screen

Efficiency Summary

Knitted Weight

Knitted Weight



Knitting by Machine - TABLE

Knitting by Machine - GRAPH

Type - Machine	c		c		c		c		c		Knitted by Machine
	Knitted by Machine	Knitted by Machine	Knitted by Machine	Knitted by Machine	Knitted by Machine	Knitted by Machine	Knitted by Machine	Knitted by Machine	Knitted by Machine		
RI											
A458	111.95	110.26	109.21	110.56	111.68	56.77	112.27	110.71	106.53	111.36	
A469	109.03	112.24	97.29	97.71	106.43	56.92	113.25	110.72	108.05	111.53	
A476	112.03	111.51	111.08	110.21	112.75	53.18	109.46	112.18	108.76	104.10	
A487	27.08	111.59	109.17	99.65	113.64	57.65	113.28	64.64	108.94	112.25	
B353	400.69	483.56	406.91	419.02	337.41	246.05	266.51	233.19	419.70	396.58	
B455	101.53	100.89	100.71	100.13	100.78	101.36	102.13	52.13	85.00	98.27	
B459	99.77	100.16	98.60	98.66	100.55	51.09	100.50	94.54	94.80	99.60	
B468	89.93	93.36	88.97	85.05	98.45	49.81	98.94	97.98	95.13	99.15	
B472	102.76	103.81	102.57	99.60	101.32	103.56	103.22	53.89	98.54	96.24	
B473	102.58	103.90	102.04	101.20	102.57	101.47	101.97	53.59	98.94	102.40	
B485	15.76	88.88	88.16	84.88	88.16	48.88	88.88	85.88	88.88	88.88	

Next Week's Planned Manufacturing Orders

[Main \ Production Intelligence] PS_Next Week MOs

Sep.05 | Week 36-2005
Home Clear

HOME

Next Week's Planned Manufacturing Orders

HELP

Available Drills:
Machine / Step /
Code

	Manufacturing Orders Planned	Planned Qty (End Date)	Planned Setup Time (End Date)	Planned Execution Time (End)	Planned Start Date	Planned End Date
1	392272	13,615	27	1,238	9/8/2005	9/8/2005
2	391618	9,691	82	1,057	9/9/2005	9/9/2005
3	391206	7,882	76	860	9/9/2005	9/9/2005
4	389596	1,886	60	189	9/6/2005	9/6/2005
5	389597	1,872	60	187	9/6/2005	9/6/2005
6	389347	1,836	60	184	9/6/2005	9/6/2005
7	389349	1,836	55	184	9/6/2005	9/6/2005
8	389351	1,836	65	184	9/6/2005	9/6/2005
9	389350	1,836	71	200	9/6/2005	9/6/2005
10	389348	1,836	60	184	9/6/2005	9/6/2005
11	389346	1,836	55	184	9/6/2005	9/6/2005
12	390254	1,155	65	116	9/9/2005	9/9/2005
13	385949	864	109	102	9/8/2005	9/8/2005
14	390255	647	49	65	9/9/2005	9/9/2005
15	390256	565	60	57	9/9/2005	9/9/2005
16	392018	12	65	2	9/6/2005	9/6/2005
17	392323	6	16	1	9/7/2005	9/7/2005
18	392330	5	180	2	9/9/2005	9/9/2005
19	392167	5			9/9/2005	9/9/2005
20	392194	4			9/9/2005	9/9/2005
21	391508	3	65	0	9/6/2005	9/6/2005
22	392111	3			9/9/2005	9/9/2005
23	392153	3			9/8/2005	9/8/2005
	TOTAL		1,282	4,992		

This page is to assist in the planning process by displaying MOs that are planned to end next week.

1. Next Week is selected by default
2. Users can drill down from MO to the planned machine, step, and code in order to display further detail of the pending orders

■ Planned Execution Time (min)
 ■ Planned Quantity

Date	Planned Execution Time (min)	Planned Quantity
09/05/2005	~1,000	~10,000
09/06/2005	~1,500	~15,000
09/07/2005	~1,000	~10,000
09/08/2005	~2,000	~18,000
09/09/2005	~1,500	~15,000
09/10/2005	~1,000	~10,000
09/11/2005	~1,000	~10,000

◀
▶

Capsule: [Main] \ Production Intelligence (Db: _Prod)

Ver. 5.5

Current Scheduled Manufacturing Orders

[Main \ Production Intelligence] PS_Current Scheduled MOs

Aug.05 Week 34-2005
Home Clear

HOME

Current Scheduled Manufacturing Orders

HELP

Available Drills: Machine / Step / Code

	Manufacturing Orders Planned	Scheduled Qty (Start Date)	Scheduled Setup Time	Scheduled Execution Time	Scheduled Start Date	Scheduled End Date
1	390213	16,380	16	1,489	8/24/2005	8/25/2005
2	390215	15,936	65	1,594	8/25/2005	8/26/2005
3	389475	13,515	14	1,536	9/10/2005	9/11/2005
TOTAL			95	4,618		

Planned Execution Time (min)Planned Quantity

Date	Planned Execution Time (min)	Planned Quantity
08/22/2005	0	0
08/23/2005	0	0
08/24/2005	~1,500	~17,000
08/25/2005	~1,600	~17,000
08/26/2005	0	0
08/27/2005	0	0
08/28/2005	~1,500	~14,000

←
→

Capsule: [Main \ Production Intelligence (Db: _Prod)

Ver. 5.5

Stop Reason Analysis

[Main \ DEMO_Textile] PRD - Stop Reason
Home Clear

Purchasing

Orders

Inventory

Production Analysis

Home

Production

Costing

Sales

Shrinkage Analysis

Working Hours Analysis

Stop Reason Analysis

Stop Analysis

Work Center Process			Machine (Master)			Stop Reason							
	N. of Stops	Vertical %		N. of Stops	Vertical %		N. of Stops	Vertical %					
1	Jet Dye	210,447	35.63	1	Machine 1	143,218	24.25	1	Frame Fire	37,857	6.41		
2	Drying	187,936	31.82	2	Machine 12	81,766	13.84	2	Inspect Eval	37,572	6.36		
3	Cutting	98,690	16.71	3	Machine 4	60,084	10.17	3	Heat Up	37,353	6.32		
4	Scour	93,539	15.84	4	Machine 22	55,852	9.46	4	Wait on Lab/	36,023	6.10		
TOTAL		590,612	100.00	5	Machine 3	39,571	6.70	5	Cool Down	34,382	5.82		
						6	Machine 2	36,356	6.16	6	Technical	34,109	5.78
						7	Machine 14	35,624	6.03	7	Run In / Har	33,749	5.71
						8	Machine 15	31,867	5.40	8	Meeting	29,698	5.03
						9	Machine 5	30,342	5.14	9	Start-Up	22,913	3.88
						10	Machine 7	29,203	4.94	10	Close-Down	20,259	3.43
						11	Machine 8	24,110	4.08	11	No Operator	19,725	3.34
						12	Machine 9	22,620	3.83	12	Change Width	19,521	3.31
TOTAL		590,612	100.00	TOTAL		590,612	100.00	13	No Fabric	19,210	3.25		
									14	Not Schedule	18,274	3.09	

Click on a machine to have graphs and tables reflect only data from that machine

Capsule: [Main] \ DEMO_Textile (Db:Demo-Textile)

Ver. 5.5

Sample Broadcast Report

2004 Q.1/04
Home Clear

Main Screen

Export Files

Broadcasting

	b
	email address
Bryan	mro@sdg-group.com
Blanchard	mbi@sdg-group.com
Bishop	mro@sdg-group.com
Blum	mro@sdg-group.com
Mayer	mbi@sdg-group.com
McNeill	mbi@sdg-group.com
Leblanc	mro@sdg-group.com

Dear colleague,

please find attached the report by product showing your sales in terms of profitability and growth against the previous year.

Regards,
The Sales Team

A	B	C	D	E	F	G	H	I	J	K	L	M	N
	Gross Sales Jan.04	Cost of Goods Sold Jan.04	Gross Margin % Jan.04	PY	% Var. Jan.04	Gross Sales Feb.04	Cost of Goods Sold Feb.04	Gross Margin % Feb.04	PY	% Var. Feb.04	Gross Sales Mar.04	Cost of Goods Sold Mar.04	Gro Marg Mar
Sports													
Chrono Alarm Timer	138,887	114,990	17.21	131,767	5.40	137,644	123,169	10.52	152,520	-9.75	133,628	133,414	
Aviator Women's	81,976	56,838	30.67	87,736	-6.57	80,451	96,052	-19.39	94,560	-14.92	107,200	85,222	2
Aviator Men's	1,180	539	54.28	913	29.22	1,565	1,628	-3.99	1,635	-4.24	736	1,301	-7
Total Sports	222,042	172,367	22.37	220,416	.74	219,660	220,849	-54	248,715	-11.68	241,565	219,937	
Sunglasses													
Reactor Non-Polarized	822,674	339,478	58.73	782,638	5.12	1,048,793	725,983	30.78	913,049	14.87	1,113,331	1,048,361	
Reactor Polarized	19,151	10,246	46.50	20,694	-7.46	31,650	15,591	50.74	26,616	18.92	51,176	30,588	4
Total Sunglasses	841,825	349,724	58.46	803,333	4.79	1,080,443	741,575	31.36	939,664	14.98	1,164,507	1,078,948	
Outdoors													
Metal Field	4,052	3,760	7.22	5,947	-31.86	7,088	6,599	6.89	8,294	-14.54	614	656	
Everest											775	775	
Total Outdoors	4,052	3,760	7.22	5,947	-31.86	7,088	6,599	6.89	8,294	-14.54	1,389	1,432	
Fashion													
Women's Easy Reader	373,396	220,941	40.83	350,204	6.62	252,408	175,507	30.47	273,304	-7.65	259,646	193,037	2
Officer	280,598	256,339	8.65	319,826	-12.27	246,035	235,181	4.41	284,810	-13.61	247,064	216,937	1
Men's Easy Reader	31,308	18,298	41.55	50,366	-37.84	65,781	48,932	25.61	86,475	-23.93	82,794	79,830	

Sheet1 / Sheet2 / Sheet3

Menu
Capsule: [Main] \ MATRIX 1048 x 768 Original (Db:Delta)

 Save